

Opening Speech at CSN Public Meeting on Stress Tests - Madrid, October 2012

Mike Weightman

HM Chief Inspector of Nuclear Installations,
Executive Head of the Office of Nuclear
Regulation, UK

Office for Nuclear Regulation

An agency of HSE

Great East Japan Earthquake 11/3/11

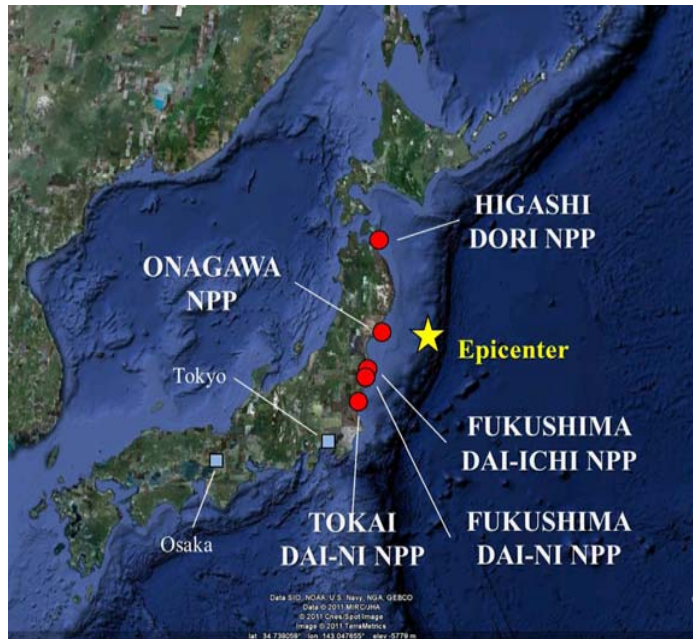
- Magnitude 9 earthquake
- Subsequent tsunami
- ~20000 dead or missing
- Massive destruction
- Impaired infrastructure
- Affected all nuclear plants on the east coast
- Greatest consequences at Fukushima Dai-ichi



Office for Nuclear Regulation

An agency of HSE

Nuclear Power Plants Affected



TEPCO Fukushima Dai-ichi Site

Office for Nuclear Regulation

An agency of HSE

Power of the Tsunami (1) Dai-ichi – tsunami hitting the turbine buildings



Office for Nuclear Regulation

An agency of HSE

Tsunami Inundation of the Site



Office for Nuclear Regulation

An agency of HSE

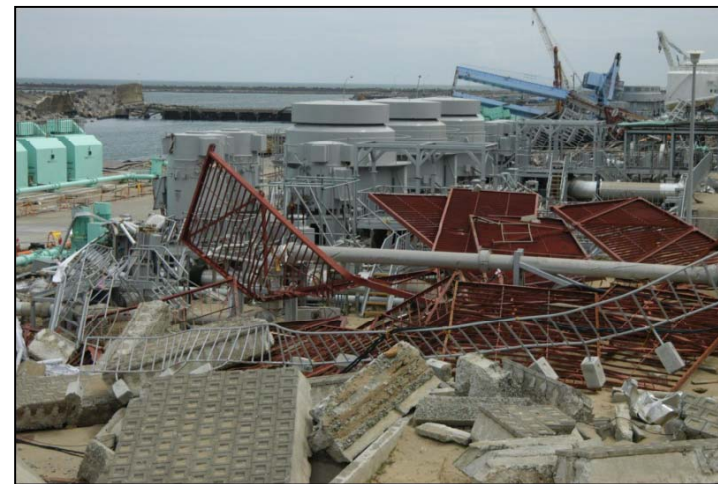
Tsunami Inundation of the Site



Office for Nuclear Regulation

An agency of HSE

Devastation across the site– 10 weeks after

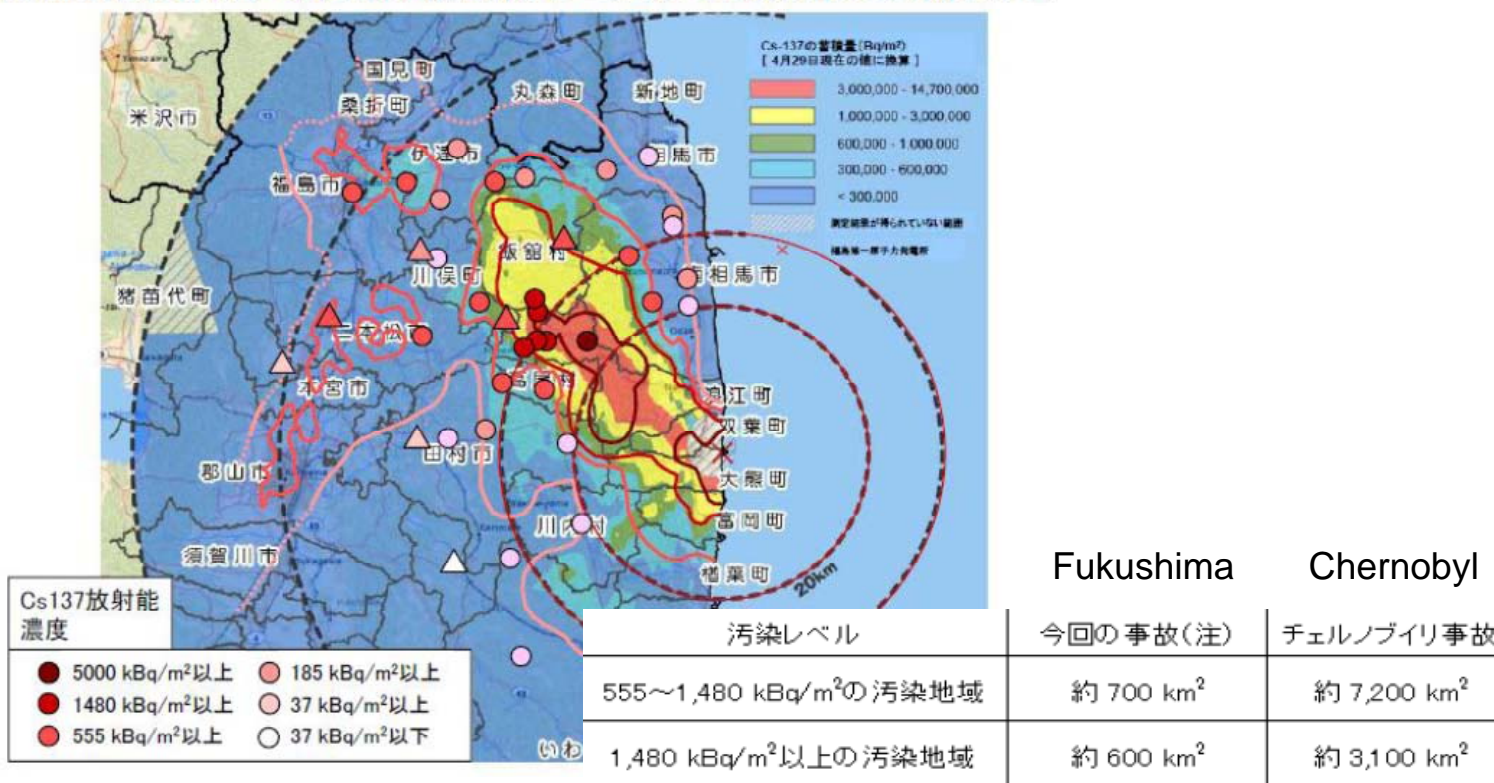


Office for Nuclear Regulation

An agency of HSE

Social Impact: Land Contamination

5月6日公表文科省・米国DOE航空機モニタリング結果との重ね合わせ



Source: T. Kawada, "Current Status of Soil Contamination and how to respond," Presentation at Japan Atomic Energy Commission Meeting, May 24, 2011

Fukushima Dai-ichi

The Design/Regulatory basis for earthquake was more or less robust

But...

1. Design/Regulatory basis for associated tsunami inadequate – 3.1m cf 14-15m
2. Plant layout optimised for earthquake but not for associated flooding:
 - Emergency diesels & electrical switchgear located in low areas such as turbine hall basements
3. Lack of consideration of common mode vulnerabilities
 - Extensive use of water cooled diesels
 - Ultimate heat sink arrangements
 - Staffing arrangements
 - Instrumentation, communications, sources of power to valves
4. Severe Accident response inadequate



Office for Nuclear Regulation

An agency of HSE